



ASPEN GRAPHICS®
FOR WINDOWS®

TRADE WITH CONFIDENCE

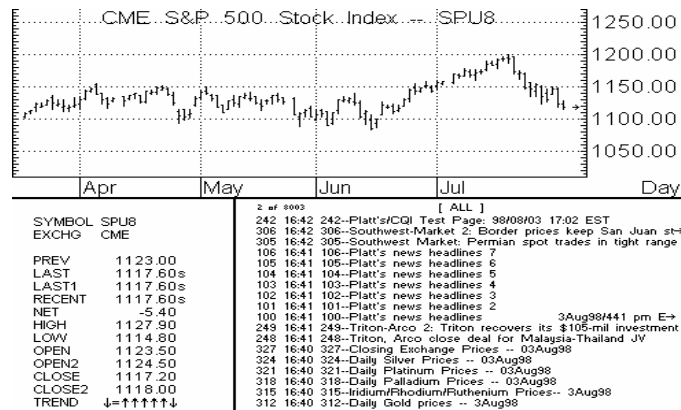
Aspen Graphics for Network Support

I. Windows & Pages

In your use of Aspen Graphics you will hear the terms “Windows” and “Pages”. What are they?

A **window** is one area of information on your screen. In the example below, a chart window, a quote window and a news window are displayed. Each of those is a unique & separate window. You can have as many windows on your screen at one time as you would like. When a window is retrieved from memory, it will overlay what is already on the screen when it is recalled.

A **page** represents the entire contents of the screen. A page is made up of one or more windows. The example **page** below has 3 components: the chart window, the quote window and the news window. When a page is retrieved from memory, it first clears the screen and then displays the retrieved page.



II. Menus

Menus in Aspen Graphics are context sensitive, which means the program is smart enough to know what menu you need based on the active window on your screen. To display a menu, press and hold the right mouse button and click left. If no window is displayed on the screen (you just have the blue background with black gridlines), the Main Menu will be displayed. If there is a window displayed on the screen, placing the mouse arrow anywhere on the window and holding the right mouse button & clicking left will display the application menu specific to the active window. Select from the menu by highlighting your choice and clicking left or tapping .

III. Troubleshooting From A Workstation

There are two special types of windows on a workstation that can aid in troubleshooting. These are the Network Access and Status windows.

The Network Access Window (keyboard command is `.ACCESS`)

This window is used to answer several important questions:

User: *What is the login name for the user?*

Server: *To which server is the user attempting to connect?*


Data Feed: *Which datafeed is being used? (this helps with symbology)*

Security: *Are the user's entitlements feed controlled or Admin controlled*

Session: *Is the session Open or Closed?*

Error Tag: *What is the ERROR TAG message? (TCP broken or abandoned; User Not Authorized; etc...)*

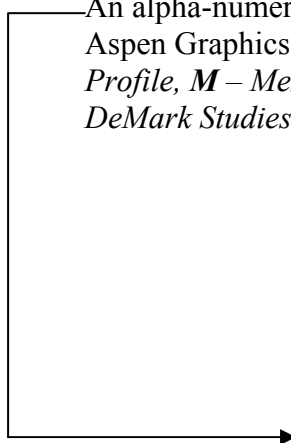
```
Aspen Session Access
User: NYARG6@NY.K48422.BRIDGE.COM (bound to profile "135744")
Server: 200.200.200.4
Data Feed: BridgeFeed
Security: ARES, Datafeed-controlled
Session: OPEN
Error Tag:
Notes:
```

To remove the access window from the screen, tap the  key.

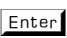
The Status Window (keyboard command is `.STAT`)

On the client level, the status window is used to identify the software version and entitlements for the user. The Aspen Graphics version number appears in the lower portion of the window, displayed in yellow text. The version number is critical in troubleshooting any problems with Aspen Graphics workstation software.

An alpha-numeric code at the bottom left corner of the window specifies the Aspen Graphics features to which the user is entitled: *C – Charting, P – Market Profile, M – Mesa Studies, O – Advanced Options or o – Basic Options, 7 – DeMark Studies, 1 – One Screen.*



```
Tue, Aug 8, 2000 87
12:44:30 PM EDT
D-Cache C-Cache
81408 0/50
Static Dynamic
81:0.451 0:0.0
Block Sizes Used/Blks
184,0,269 836/26488
Aspen WORKSTATION
V3.70b, May 16 2000
Build: OFFICIAL 2634
CPMO71 2E36DC1D
NYARG6@NY.K48422.BRIDGE
ASPEN (bf)
```

To remove the status window from the screen, type `.STAT`  again.

IV. Important Troubleshooting Pages

A list of defined pages on the workstation can be displayed by left clicking on File\Retrieve Page. Some of these pages are unique to the workstation, and others are default pages loaded with the software. Some of these pages are particularly helpful in troubleshooting problems with the software.

Cht_1 – Left click on Cht_1 from the List of Pages; this will bring up a full screen daily bar chart for your troubleshooting purposes. *When troubleshooting charting problems, it is critical to determine both the time frame of the chart and the symbol being charted.* To change the charted symbol, simply type in the new symbol, for example, IBM . To change the chart to an intraday time frame, type in the amount of minutes and . For example, to change to a 60 minute chart, type 60 . Any number between 0 and 1439 minutes can be used as the time frame of the chart. For historical charts, type in .day, .week, .month, .quarter or .year. Note the use of the period preceding the commands for historical charts. The period is necessary to distinguish these as commands, and not symbols.



QT_40v or Quote_40 – This quote page can be displayed by left clicking on File\Retrieve Page. Quote Pages display live data as it is received from the data provider. If this page is not updating during trading hours, the first course of action is

SYMBOL	LAST	NET	OPEN	HIGH	LOW	PREV	BID	ASK	TIME	TICVOL	TVOL	TREND
IBM.N	118 3/4	-0 1/2	118 3/4	119 1/2	118	119 1/2	118 3/4	118 7/8	11:04	30	585	=
DIS.N	39 3/8	-0 1/2	40 1/2	40 1/2	39 1/2	40 1/2	39 3/8	39 3/8	11:04	28	321	↑↑↑↑↓
MYL.N	22 1/2	0	22 1/2	24 1/2	22 1/2	22 1/2	22 1/2	22 1/2	11:03	2000	298	↓↓↓↑↑
MIRK.N	7 1/4	0 1/4	7 3/8	7 1/2	7 1/8	7 1/8	7 1/8	7 1/8	11:04	20	484	↓↑↑↑↑
T.N	29 1/2	-0 1/2	30 1/2	30 1/2	29 1/2	30 1/2	29 1/2	29 1/2	11:04	200	849	↓↑↑↑↑
GM.N	61 1/2	0 1/2	60 3/4	61 1/2	60 1/2	60 1/2	61 1/2	61 1/2	11:04	55	247	↑↑↓↑↑
F.N	29 1/2	0	29 1/2	29 1/2	29 1/2	29 1/2	29 1/2	29 1/2	11:04	300	269	↓↑↑↑↑
R.N	21 1/2	0 1/2	21 3/4	22	21 1/2	21 1/2	21 1/2	21 1/2	10:48	4000	43	↑↑↑↑↑
DEL.N	22 1/2	1 1/2	21 3/4	23	21 1/2	21 1/2	22 1/2	22 1/2	10:34	100	12	↓↑↑↑↑
INTL.O	13 1/2	0 1/2	13 1/2	13 1/2	13	12 7/8	13 1/2	13 1/2	11:03	500	139	↑↑↑↑↑
GEN	56 3/4	1	55 3/4	57 1/2	55 1/2	55 3/4	56 1/2	56 1/2	11:04	100	989	↑↑↓↑↑
DELL.O	42 1/2	0 1/2	41 3/4	42 1/2	41 1/2	41 1/2	42 1/2	42 1/2	11:04	10	4927	↑↓↑↓
WMT.N	51 1/2	-1 1/2	53 1/2	53 1/2	51 1/2	53 1/2	51 1/2	51 1/2	11:04	1700	656	↑↑↑↑↑
YELLO	16	0 1/2	15 3/4	16 1/2	15 1/2	15 1/2	15 1/2	15 1/2	10:46	500	23	↑↑↑↑↑
TOM.N	9 3/4	0 1/2	9 1/2	9 1/2	9 1/2	9 1/2	9 1/2	9 1/2	11:04	171	62	↑↑↑↑↑
K.N	27	1 1/2	26	27 1/2	26 1/2	25 1/2	26 1/2	27	11:04	16	137	↑↑↑↑↑
HP.N	34 1/2	-0 1/2	34 1/2	36 1/2	34 1/2	34 1/2	34 1/2	34 1/2	11:02	800	71	↓↑↑↑↑
Q	49	-0 1/2	50 1/2	51 1/2	48 1/2	51 1/2	48 1/2	49	11:04	10	6000	↑↑↓↑↑
A.N	39 1/2	-0 1/2	39 1/2	39 1/2	39 1/2	39 1/2	39 1/2	39 1/2	11:04	35	302	↑↑↑↑↑
S.N	30 1/2	0 1/2	30 1/2	31 1/2	30 1/2	30 1/2	30 1/2	30 1/2	11:04	100	176	↑↑↑↑↑
C.N	7 1/2	-0 1/2	7 1/2	7 1/2	7 1/2	7 1/2	7 1/2	7 1/2	11:04	3100	664	↑↑↑↑↑
MMM.N	94 1/2	1 1/2	92 1/2	94 1/2	92 1/2	92 1/2	94 1/2	94 1/2	11:04	500	304	↓↑↑↑↑
AMC	0										0	↓
CBS.N	48	1 1/2	48 1/2	48 1/2	47 1/2	48 1/2	47 1/2	48	Aug 9	100	513700	
CCC.N	8	0 1/2	7 1/2	8	7 1/2	7 1/2	7 1/2	8	10:59	6300	16	↑↑↑↑↑
PEP.N	44 1/2	0 1/2	44	44 1/2	44	44	44 1/2	44 1/2	11:04	100	263	↓↑↑↑↑
BUD.N	83 1/2	0 1/2	84 1/2	84 1/2	83 1/2	84 1/2	83 1/2	83 1/2	11:02	100	132	↑↑↑↑↑
USA.N	16 1/2	0	16 1/2	16 1/2	16 1/2	16 1/2	16 1/2	16 1/2	10:47	800	18	↓↑↑↑↑
DOW.N	29 1/2	0	29 1/2	29 1/2	29 1/2	29 1/2	29 1/2	29 1/2	11:02	20000	209	↑↑↑↑↑
AAFL.O	48	0 1/2	48	48 1/2	47 1/2	47 1/2	47 1/2	48	11:04	10	1400	=====
JNJ.N	96 1/2	1 1/2	95 1/2	96 1/2	95 1/2	94 1/2	96 1/2	96 1/2	11:04	100	468	↓↑↑↑↑
STC.N	12 1/2	-0 1/2	12 1/2	12 1/2	13	12 1/2	13	13	10:36	400	3	=====
MMM.N	32 1/2	1 1/2	32 1/2	32 1/2	32 1/2	32 1/2	32 1/2	32 1/2	11:04	500	304	↓↑↑↑↑
PPF.N	21 1/2	0 1/2	20 1/2	21 1/2	20 1/2	21	21 1/2	21 1/2	10:57	800	41	↑↑↑↑↑
PG.N	56 1/2	0 1/2	56 1/2	56 1/2	56 1/2	56 1/2	56 1/2	56 1/2	11:04	200	311	↑↑↑↑↑
RTC	0										0	
LND.N	11 1/2	-0 1/2	11 1/2	11 1/2	11 1/2	11 1/2	11 1/2	11 1/2	10:51	1800	1	=
MSFT.O	73 1/2	-0 1/2	73 1/2	74 1/2	72 1/2	74 1/2	73 1/2	73 1/2	11:04	400	6631	=====
TVN	62 1/2	0 1/2	62 1/2	62 1/2	62 1/2	62 1/2	62 1/2	62 1/2	10:59	2000	73	↓↑↑↑↑
AA.N	33 1/2	-0 1/2	33 1/2	34	33 1/2	33 1/2	33 1/2	33 1/2	11:02	100	224	↓↑↑↑↑

to check the status window at the Aspen SERVER and determine whether the number in the BYTES IN field is incrementing. If not, this indicates a problem with data being written to the server and Aspen Graphics technical support should be contacted immediately for further troubleshooting.

Full_News – This is a full screen news window, which should contain scrolling headlines. In troubleshooting news problems, it is important to note the time and/or date of the current headline (the one at the top of the list) and also note any news categories selected. The category selected is displayed in yellow at the top of the window. To read a story, left click on the headline. To return to the list of headlines, left click again.

1 of 2289

Index of Futures World News (FWN) Stories

566	16:18	WRAP: Semiconductor stocks fall for second day on analyst downgrade
565	16:17	NY Natural Gas: Soars above \$5 after low storage injection
564	16:17	BRIDGE: GLOBAL STOCK MARKET LEVELS AT 16:11 ET -Sep 6
563	16:17	USDA opening livestock market summary-Sep 6
562	16:16	South Africa 10-Day Weather: Central areas wet
561	16:16	Lexington, Kentucky livestock auction-Sep 6
560	16:15	USDA Texas Panhandle/W. Oklahoma direct cattle sales-Sept. 6
559	16:15	USDA W. Cornbelt opening direct hog/hot carcass value-Sep 6
558	16:15	USDA Meat price report: 1115 national carlot beef-Sep 6
557	16:14	USDA Illinois direct cattle sales-Sep 6
556	16:14	USDA Delmarva broiler/fryer market-Sep 6
555	16:14	USDA Estimated daily livestock slaughter-Sep 6
554	16:14	USDA Iowa S. Minnesota Weekly Avg Hog Wts-Sep 6
553	16:14	USDA Meat Price Report: 1500 National Carlot Pork-Sep 6
552	16:13	USDA Meat Price Report: 1500 National Carlot Pork-Sep 6
551	16:12	USDA national broiler market-Sep 6
550	16:12	PM CBT grain/soybean/rice receipts/certificates-Sep 6
549	16:12	USDA W. Cornbelt closing direct hog/hot carcass value-Sep 6
548	16:12	Global Commodity/Financial Futures Snapshot
547	16:11	Global Commodity/Financial Futures Snapshot
546	16:11	USDA E. Cornbelt closing direct hog/hot carcass value-Sep 6
545	16:10	US DEBT FUTURES ALERT: Bonds feel weight of corporate supply
544	16:10	US DEBT FUTURES ALERT: Bonds feel weight of corporate supply
543	16:09	USDA Iowa S. Minnesota Early Direct Cattle Sales-Sep 6
542	16:09	US DEBT FUTURES ALERT: Bonds feel weight of corporate supply
541	16:08	US DEBT FUTURES ALERT: Bonds feel weight of corporate supply
540	16:07	USDA daily midwest livestock summary-Sep 6
539	16:07	USDA Minneapolis cash grain close-Sep 6
538	16:06	USDA Minnesota wheat protein/premium/arrive bids-Sep 6
537	16:06	USDA Texas cash grain prices-Sep 6

Superquote – This page is one of the most helpful diagnostic tools when troubleshooting. Superquote gives you a lot of details about one symbol, including: a description of the symbol in question, the exchange on which it trades, opening and closing times, time zone in which it trades and the trading units.

SUPERQUOTE - This page shows all quote fields available.

SYMBOL	IBM	Sbase	IBM	Sext			
DESCRIPTION	Int'l Business Mach						
EXCHG	NYSE						
EXCHG-DESCRIPTION	New York	Stock	Exchange				
Expire	Xmonth	Strike					
PREV	131 ⁰⁶ / ₈	NET	00.5	LAST	131 ⁵ / ₈ a	RECENT	131 ⁵ / ₈
OPEN	130 ⁷ / ₈	HIGH	134 ⁷ / ₈	CLOSE		TREND	====↓↑↓↑
OPEN2		LOW	130 ³ / ₈	CLOSE2		MID	131 ¹⁴ / ₈
BID	131 ¹ / ₄ m	ASK	131 ⁵ / ₈ m	TRADE	131 ³ / ₈		
BIDSIZE	100	ASKSIZE	100	TRADESOURCE	t		
BIDTIME	16:13	ASKTIME	16:18	CONDITION			
BBID	131 ¹ / ₄ m	BASK	131 ⁵ / ₈ m				
BBIDSIZE	100	BASKSIZE	100				
BBIDTIME	16:13	BASKTIME	16:18				
BATE	a	UNITS	32	OPEN INTEREST			
TYPE	2	OPEN/CLOSE	TIME tz	VOLUME	6457100		
DOLLARS	1.000	1	9:30 - 16:00 31	TVOL	6457100		
OTYPE		2	-	UVOL	2012200		
				DVOL	1714800		
LAST1	131 ⁵ / ₈ a	TICVOL	100	TIME	16:18	FORMULAS	
LAST2	131 ³ / ₈	TICVOL2	3000	TIME2	16:15	PCHG	0.143
LAST3	131 ³ / ₈	TICVOL3	1900	TIME3	16:15	RANGE	
LAST4	131 ³ / ₈	TICVOL4	100	TIME4	16:15	Moneyflo	
LAST5	131 ³ / ₈	TICVOL5	1400	TIME5	16:14		
LAST6	131 ³ / ₈ ↓	TICVOL6	600	TIME6	16:13		

V. Efficiency Tips

Saving Pages - To save a page, left click on File/Save Page and type in a unique name for the page, following the rules below. The page will now be listed on the List of Pages (File/Retrieve Page). Aspen does not automatically save changes made to the user's page, but an AutoSave feature can be toggled on and off from the List of Pages. AutoSave on will create drafts of the screen layout, about once a minute, named Autosave1 – Autosave5. It is strongly recommended to turn AutoSave off once the custom page has been built.

THREE things that CAN NOT be used as a name for a Page (a message will appear that says "Reserved"):

A Symbol: do not use a symbol (such as cz7, sph8, ibm, indu, etc.) as the name of your page, although symbols can be used as *part* of a name (ex: ibmchart2)

A Number: do not use a number as the name of your page, although numbers can be used as *part* of a name (see previous example).

An Aspen command, or the name of a previously saved page that you don't want overwritten.

Once you save a page, you will find it by left clicking on **File/Retrieve Page**. This will display the List of Pages. Your custom page name should appear on this menu in alphabetical order.

Saving Windows – Any window on the screen can be saved for future use by typing in **.WSAVE** **Enter**. The rules for saving windows are identical to the rules listed above for saving a page. Your window will be listed on the Window Selection Menu (File/New) under the corresponding heading.

Drag & Drop Feature -- A quick way to display a symbol in a window without typing:

- 1) Place the mouse pointer on the symbol
- 2) Press and hold down the left mouse button until a rectangle attaches to the pointer
- 3) Drag the rectangle into the chart
- 4) Release the mouse button.

The selected symbol will now appear in the chart. You may drag & drop from a quote window to a chart, chart to quote, quote to time and sales, etc....

Function Keys -- Assigning a page or command to a function key bypasses menu clicking for quick recall of commonly used functions in the program. To assign a page or command to a function key, type **Ctrl** **F** or **.keys** **Enter**. **PgUp** or **PgDn** on the keyboard to scroll through functions assigned to keys, or left click on **Next** or **Previous** at the bottom of the key menu.

NOTE: * **keys** are reserved as integral functions of the software, so don't assign other uses to them or software performance could be affected.

Highlight the key for assignment (e.g. F1), left-click to open an edit box , type name of page, window or command, **Enter**, then **Done**.

Ctrl/**K** displays a key assignment template along screen's bottom (and toggles it off.) Holding down **Shift**, **Ctrl** or **Ctrl**/**Shift** keys display assignments to those key combination.

Click & Hold NewsWord Scan -- Here's a *great* way to scan the headlines of a news window for a particular word:

1. Find a word in the headlines of a news window that you're interested in;
2. Click and hold the left mouse button on that word (similar to above) until the rectangle appears;
3. When you release the left mouse button, the headlines will be scanned for the chosen word.

News Search - you can scan the headlines of news stories for any keyword or combination of keywords. For example, in a news window, type:

/drought for all stories with the word "drought" in the headline

/corn&oil for all stories with the words "corn" and "oil" in the headline

/corn,oats for all stories with the words "corn" or "oats" in the headline

/(soybean&oil)%crude for all stories with the words "soybean" and "oil" but not the word "crude" in the headline

Tables -- For a tabular readout of the values on a chart, just bring up a Graph Menu and select **Table**. Tables have their own menu to make them easy to navigate.

and @ Macros -- Using these macros instead of the specific contract, like hun0, will make your charts and quote pages update (rollover) automatically when the front month expires.

brings up the **front month** of a futures contract **Ex: ng#** is the front month of natural gas

#1 is the **first month out** of a futures contract; **ng#1** is the first month out of natural gas (any number can be used in place of the 1 in the above example)

@ brings up all currently trading contracts; **cl@** will display all crude contracts currently trading

@6 brings up the front six trading contracts; **cl@6** will display the front 6 months of crude (any number can be used in place of the 6 in the above example)

F-12 key – You can recall commands previously typed in by tapping the **F12** key. Each command will be recalled starting with the most recent and going back to the oldest. If you tap the **F12** too many times and need to scroll forward, press **Shift** **F12**. This is a great way to clone Formulas and Alarms, and saves lots of time whenever there is a need to repeat previously typed information.

Keyboard Shortcuts

Note: these will not work unless you have an MKEY file in the user's directory.

An Easy Way To Do It

What You Would Like to Do

MENUS

- Display the Main Menu
- Display the menu for the active window
- Display the List of Pages
- Display the Window Selection Menu
- Display the Formula Listing
- Display the Alarm menu

Shift ~
~
Ctrl L
.win
.form
.ala

CLEARING

- Clear a Menu off the screen
- Clear a Window off the screen
- Clear the Status Window off the screen
(the little window in the lower *right* corner of the screen)
- Clear the Console Window off the screen
(the little window in the lower *left* corner of the screen)
- Clear the Open/High/Low/Close box off of a chart
- Clear everything off the screen

Esc
Ctrl D
Ctrl E
.cons
End
.clear

SAVING □

- Save as a Page
- Save as a Window

Ctrl V or .save
Ctrl U or .wsave

CHARTING

- Bring up a half-screen chart
- Bring up a full-screen chart
- Change to Candlesticks
- Change back to Bar Chart (also removes overlays)
- Change to Point & Figure
- Change to a tick chart
- Clear the cursor & the Open/High/Low/Close box

.dc
cht_1
Ctrl N or .candle
Ctrl B
.p&f
0 (zero) Enter
End

QUOTES

- Clear data in a Quote Page

, , Enter

PRINTING

- Print the active window

.print

COMMANDS

- Display the last command
- Repeat the last command

F12
F12 Enter

VI. Other Aspen Graphics features

Once you have mastered the basic navigation skills of Aspen Graphics, you may want to check out these other features:

- a. **Alarms**—set an alarm on price levels, study values or custom formulas.
- b. **Color Rules**—Act as a visual alert on a chart by coloring bars a specific color when your condition is met.
- c. **DDE**—Export data from Aspen Graphics into Excel OR create a symbol for custom data you have databased in Excel.
- d. **Formulas**—Aspen Graphics' Formula Writer allows you to create virtually any custom indicator to display in charts, quote windows or to export via DDE.
- e. **Aspen Optionanalysis**—Basic and Advanced Aspen Optionanalysis are special subscription packages tailored to options analysis. Advanced Aspen Optionanalysis includes Option Books, an incredibly flexible organizational tool to keep track of your portfolio.

Consult your Aspen Graphics User's Manual for specifics on these features or ask any Customer Support representative or Trainer for more information on these features.