

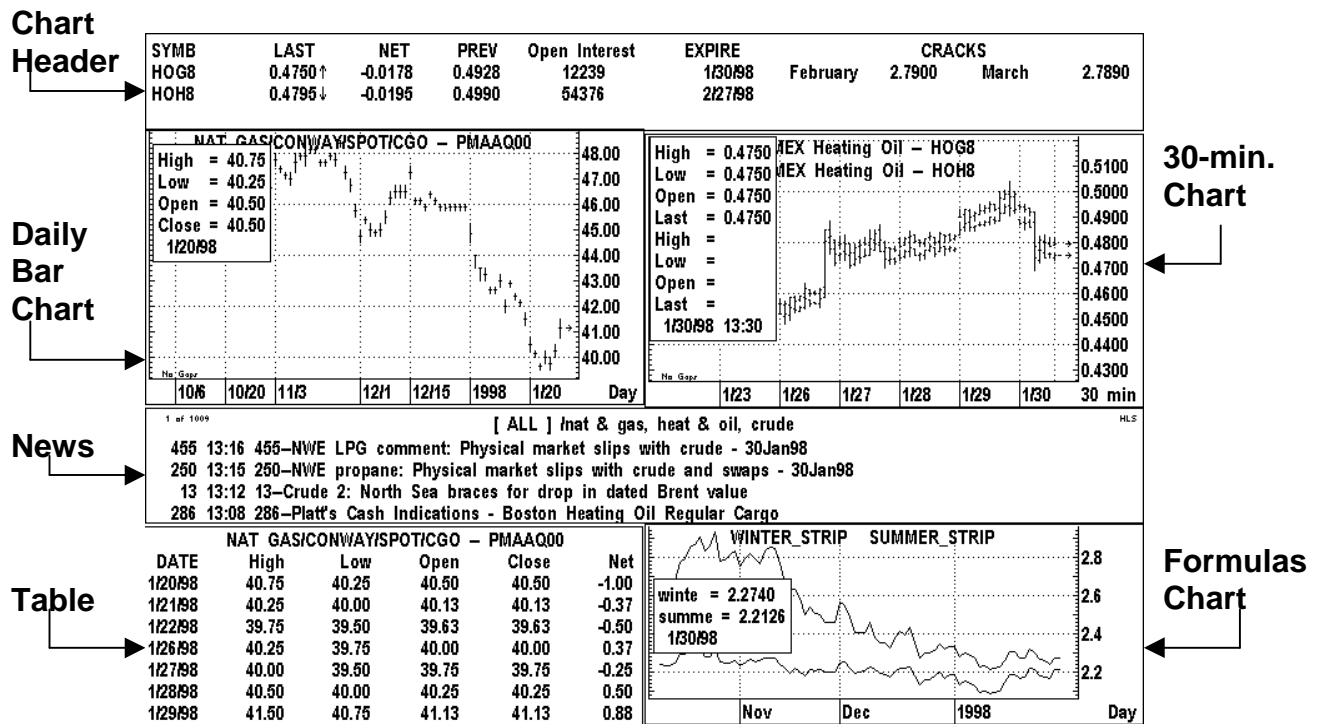


# Page Building: Tips & Techniques

One of the benefits of using Aspen Graphics for Windows® is having the ability to arrange your screen with the information you need in any layout that you like. When you see the term **“Page”** in any Aspen Graphics documentation, it is referring to the contents of the screen. The figure below is an example of a page.

A **“Window”** in Aspen Graphics is one area of information; it is a subset of a page. In the figure below, the chart header is a window, the news area is another window, the charts are separate windows and the table is yet another window. All of these windows are saved together as one entity, or a **“Page”**.

The following documentation describes each type of window and the steps to follow to create this page on your own. Developing these skills will allow you to apply these techniques to creating your own pages in Aspen.



---

## Page Building Tip #1 – AutoSave





AutoSave mode will automatically save your page layout about once a minute; using it will give you access to the last five minutes of work (\_Autosave1 is the most recent save; \_AutoSave5 is the layout saved five minutes ago). Select **File/Retrieve Page** from the Menubar in Aspen, left click on **AutoSave**.

---

## Create a Chart Header:

A chart header is a type of quote window that is linked to a chart. If a symbol is typed into either window, both the chart and the header will update simultaneously. Why would you use this? The chart header allows you to see more information on the symbol being charted than is displayed in the chart cursor box. To build the chart header displayed on the previous page, follow these steps:

1. Select **File/New...** from the Menubar in Aspen Graphics. Left click on **Default** under the QUOTES heading to display a default quote window. Left click on **Done** from the Window Selection Menu.
2. Display a Quote Menu (by tapping the  key **OR** by holding down the right mouse button and clicking left with the mouse arrow inside the quote window). Select **Modify Layout**. There will be a gray grid displayed on the quote window and the Edit Quotes menu will appear on the screen.
3. Select **Toggle Code Menu**. From this menu, highlight and click with the left mouse button on **SYMB**. This will enter both the Label (the yellow SYMB in the top row) and the quote code (\$1.SYMB in the 2<sup>nd</sup> row) into the top left-hand corner of the chart header. Left click **LAST, NET, PREV, OI & EXPIRE** (the cursor will automatically move to the next available space as you select each code). Hit the  key to clear the Toggle Code Menu.


---

## Page Building Tip #2 – Customize a Label in a Quote Window



To change the label for the open interest field so that it is spelled out instead of OI, left click on **OI**. A box will appear in the left corner of the window:

**CELL = "OI"**

Leave the “ at the beginning of the line, and type in **Open Interest**. Tap the  key. If the label overlaps the Expire label, left click on **Open Interest** and drag the cell to the left by holding the right mouse button down on top of the cell. When the label is where you would like it to be, left click to enter.

Any character can be used in a label as long as the “ is put at the beginning of the line.

---

4. Type in **filldn 1,2**  (make sure to *leave a space* after filldn). There will now be a second row of quote codes beginning with \$2.
5. Left click in the cell where you would like to add the label for the crack formulas. Type in **“CRACKS**.
6. Left click in the cell where you would like to display the month for the first crack formula (February in the example above). Type in **\$1.xmonth**.
7. Single left click in the cell that will display the month for the second crack formula (March in the example above). Type in **\$2.xmonth**.
8. Type **.form** to display the Formula Listing.
9. Left click on **Enter Formula**. Type in the following formula: **crack=(\$1\*42)-\$2** Make sure to hit the  key after typing in the formula! Left click on **Done**.
10. Left click in the cell where you would like to add the crack formula for front month (the formula to the right of February in our example above). In the CELL= box, type in **crack(\$1,cl#)** .
11. Left click in the cell where you would like to add the crack formula calculated on the first out month (the formula to the right of March in the example above). In the CELL= box, type in **crack(\$2,cl#1)** .
12. Resize the window by double-clicking and HOLDING DOWN the right mouse button near the bottom border of the window. Drag the mouse until the border is just underneath the second row of quote codes.
13. Left click on **Quit Modify** from the Edit Quotes menu.

---

### **Page Building Tip #3 – Linking a header to a chart**



A quote window must be named **chart\_header** to be linked to a chart. Type **.wsave**  and type **chart\_header** at the “Save Window As:” prompt.

---

14. Clear window by typing **.clear**.

## **Add two charts to the Page:**

15. Left click on **File/New...** and select **Default** under the CHARTS heading. Left click on **Done** to clear the menu off the screen. Type in the time frame in which you would like to view the chart (**30**  for the 30-minute chart in the example above).

16. Type **header** Enter. This will retrieve the chart header you created. Resize the chart so that it looks like the example above. Type **ho@2** in either the header or the chart, and you will see the data for that symbol in both windows.
17. Activate the chart by clicking with the right mouse button inside the chart. Type **.wsave** Enter and at the “Save Window As..” prompt, type **chart\_**.
18. Tap the F12 key one time. **Chart\_** will appear. Hit Enter. A second chart will be displayed directly on top of the first chart.
19. Drag the chart with the right mouse button over to the left-hand side of the screen. Type in a new symbol (to duplicate the example above, type in **pmaa00**). Change the time frame of the chart by typing in **.day**.

## Add the Table. . .

20. Inside the daily chart, bring up a Graph Menu and left-click on **Table**. The data to the right of where the chart cursor resides will be displayed in tabular form in its own window. Resize and drag the window to the bottom of the screen as in the example above.)

## Bring on the news:

21. Left click on **File/New...** to display the Window Selection Menu. Left click on **Default** under the NEWS heading. Left click on **Done**.
22. Move and resize the news window so that your screen resembles the example page.

---

### *Page Building Tip#4 – Search the news headlines*



Headlines can be filtered to display only the subjects that pertain to your trading. To perform a keyword search in a news window, type in the keyword(s) prefaced with a forward slash. News search operators: **&** will return headlines that include both key words, **,** will return headlines with either key word and **%** will return headlines which include the first keyword BUT NOT the second. The search **/nat&gas,heat&oil,crude** returns all of the headlines which contain both the words “nat” and “gas” OR “heat” and “oil” OR “crude”.

---

## Charting a formula:

23. To chart the Winter and Summer strip formulas, follow these steps:
  - a. Type **.form** to display the Formula Listing. Left click on **Enter Formula**.

- b. Type in the following formula (where you see ^ in the formula, insert a space):  
`StripDiv=quote(if(ngh9.xdays>=119,5,if(ngh9.xdays<119^and^ ngh9.xdays>=92,4,if(ngh9.xdays<92^and^ ngh9.xdays>=58,3,if(ngh9.xdays<58^and^ ngh9.xdays>=28,2,1))))))`
- c. Left click on **Enter Formula**. Type in the following formula (again, where you see the character ^ in the formula, replace it with a space):  
`StripDiv1=quote(if(ngv8.xdays>=185,7,if(ngv8.xdays<185^and^ ngv8.xdays>=153,6,if(ngv8.xdays<153^and^ngv8.xdays>=124,5, if(ngv8.xdays<124^and^ ngv8.xdays>=94,4,if(ngv8.xdays<94^and^ ngv8.xdays>=61,3,if(ngv8.xdays<61^and^ngv8.xdays>=32,2,1))))))`
- d. Left click on **Enter Formula**. Type in:  
`Summer_Strip=sum(ngj8,ngk8,ngm8,ngn8,ngq8,ngu8,ngv8)/StripDiv1`
- e. Left click on **Enter Formula**. Type in:  
`Winter_Strip=sum(ngx8,ngz8,ngf8,ngg8,ng8)/StripDiv`
- f. To display a chart, left click on **File/New...** and select **chart\_** . Left click on **Done**.
- g. Resize the window and move to the bottom right corner of the page. Type in **Winter\_strip,summer\_strip**
- h. Change the time frame to a daily chart by typing **.day**

## Save the Page:

24. Save the page by selecting **File/Save Page**. Enter a unique name at “Save Page As:” prompt. Up to 19 characters can be used to name pages or windows. Avoid using *only* symbols or numbers (this will return a Reserved message), although you can use them in combination with no conflict.
25. Remember to turn the AutoSave feature off by bringing up the List of Pages and clicking left on **AutoSave**.

---

### *Page Building Tip#5 – Change all windows on a page simultaneously*



Using the  key before a symbol on the command line will enter that symbol in every window on the page. Ex: `\ng#` changes the symbols on all charts and windows on that page to the front month of Natural Gas. The  can be used with commands as well. Typing `.day` will change all charts on the page to daily bars.

---